

NOWY SĄCZ

Established in 1292 on a trade route between Poland and Hungary, Nowy Sącz became an important commercial center. By the fifteenth century, it was the fourth-largest city of Małopolska (Little Poland), after Kraków, Sandomierz and Lublin. The Jewish presence in Nowy Sącz is attested in a document from 1469, but it was not until 1676 that a royal privilege granted Jews the right to build houses and engage in commerce. Jews played an important role in trade, carpentry, tailoring and engraving.

Taking advantage of the political chaos in Poland, Austrian authorities took over Nowy Sącz in 1770, two years before the first partition of the Polish Commonwealth. Under Austrian rule, the once prosperous city declined, its population decreased significantly, and the Jews were compelled to live in a special quarter. In the early nineteenth century, the Zanzler (from Zanz, the Jewish name of the town) Hasidic dynasty was founded in Nowy Sącz by Rebbe Chaim Ben Arieh Leib Halberstam. During the interwar period, the community supported several Jewish schools, a yeshiva, a hospital, and various sports clubs.

Following the German occupation of Nowy Sącz, the Nazis established a ghetto in July 1941. In the following year, they created forced-labor camps in Ronów and Lipie. In the ghetto, Jews worked for the Germans as tailors, shoemakers, and carpenters, and they also loaded and unloaded trains. The ghetto was liquidated in August 1942. The Jews from Nowy Sącz were murdered in the Bełżec death camp.

Location

97 km ESE of Kraków
49°37' / 20°42'
Voivodship: Nowy Sącz

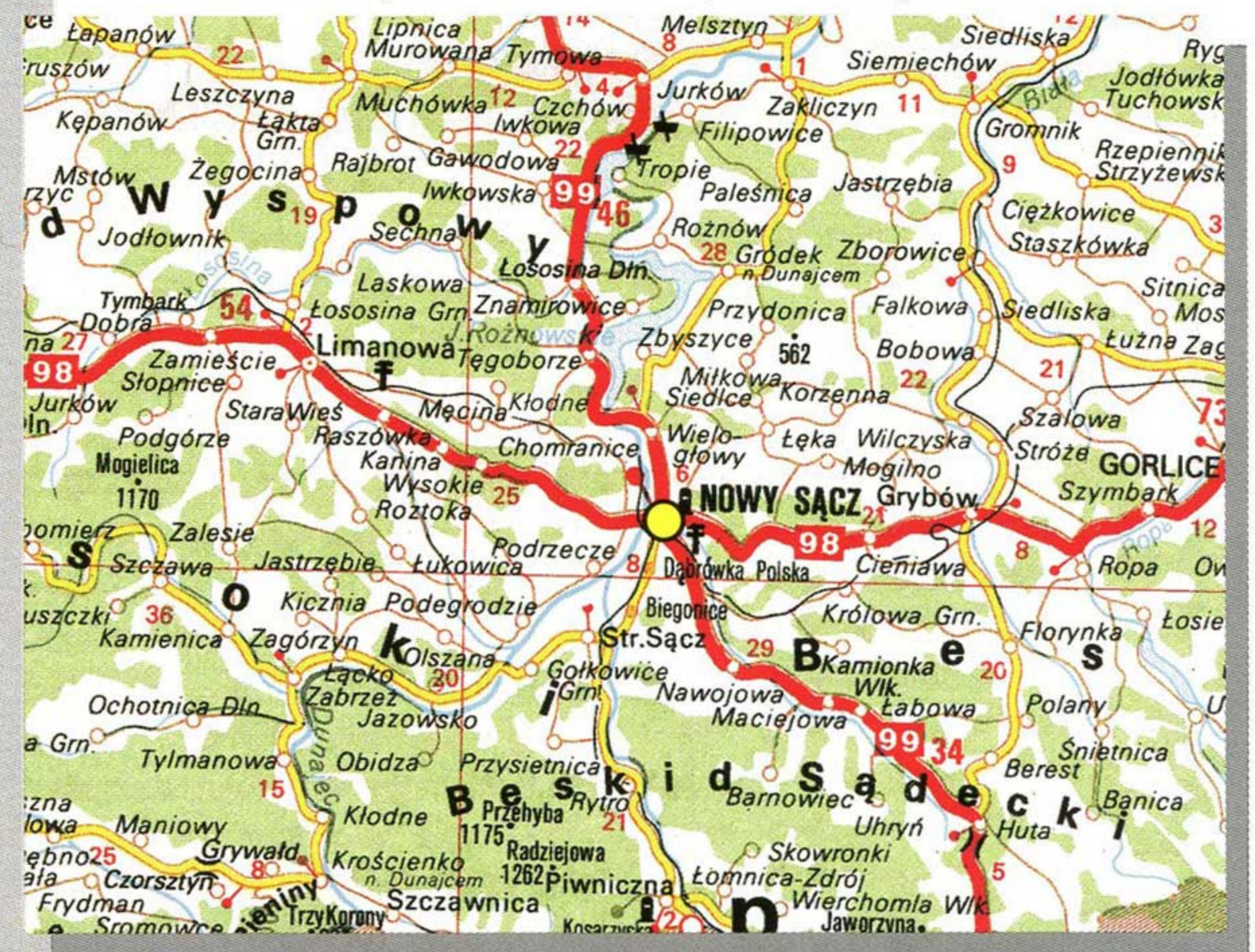
General Population, 1939

31,000 (34% Jewish)

General Population, 1994

62,568

NAYSANTS, NOVI SANSH, SANTS, TSANTS



SYNAGOGUES

ul. Bóźnicza 1 [Synagogue Street]

The Great Synagogue was constructed in 1746.
Current use: art museum (Muzeum Okręgowe).

ul. Jagiellońska 50

Current use: apartments.



Synagogue, ul. Bóźnicza 1, c. 1968

1

JEWISH CEMETERY

ul. Rybacka 12

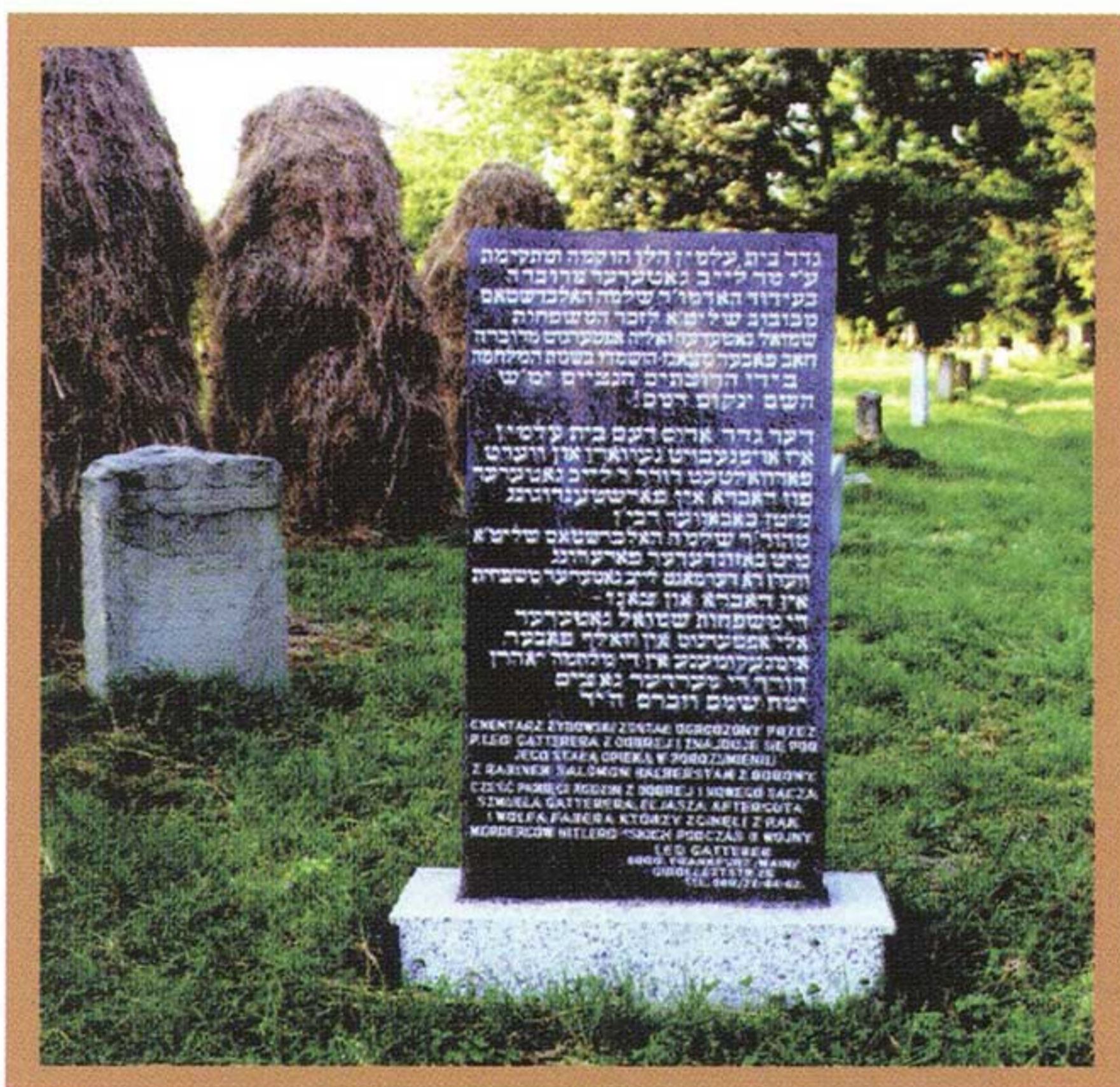
From 25,000 burials, 200 tombstones remain.

DEPORTATIONS

Bełżec.



Jewish cemetery, ul. Rybacka 12, 1993 2



Holocaust memorial in Jewish cemetery, 1993 3

HOLOCAUST MEMORIAL

ul. Rybacka 12 (Jewish cemetery)

A monument commemorates the sites of mass executions of 25,000 Jews.



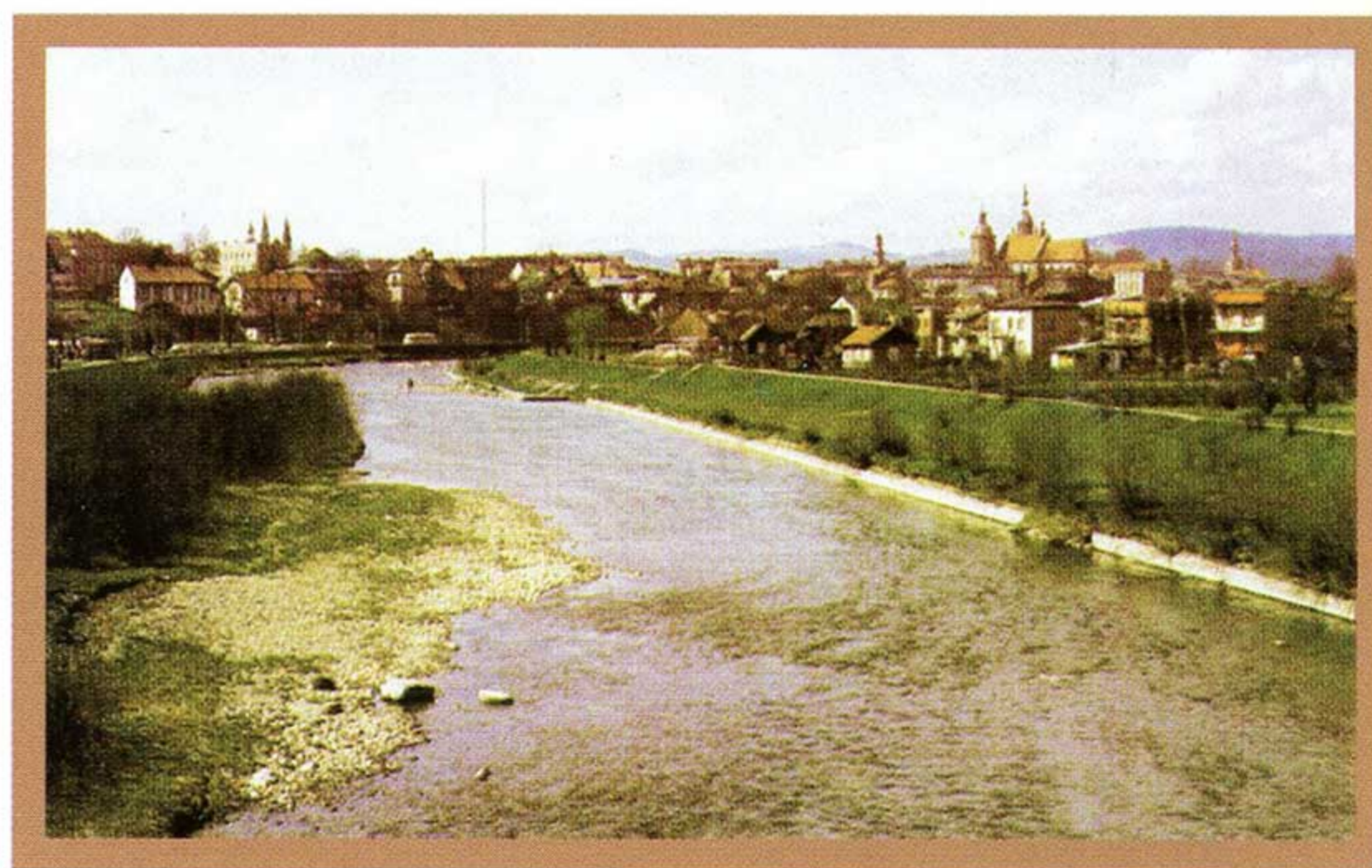
ul. Krakowska, c. 1915 4

SELECTED READING

Krupiński, Andrzej B. *Dawna synagoga nowosądecka* (The Old Synagogue in Nowy Sącz). Nowy Sącz: Muzeum Okręgowe w Nowym Sączu: 1985. (P)

Mahler, Raphael. *Mekorot le-toledot kehilat yehudit be-Polin* (Tsants) (Sources for the History of the Jewish Community in Poland [Santz]). Tel Aviv: Tel Aviv University, 1963. (H)

———. “Z dziejów Żydów w Nowym Sączu w XVII i XVIII wieku” (Chapters in the History of the Jews in Nowy Sącz in the Seventeenth and Eighteenth Centuries). *BŻIH* 55 (1965): 3–32; 56 (1965): 28–58. (P)



Nowy Sącz, today 5

Mahler, Raphael, ed. *Sefer Sants* (The Book of Sants). New York: Former Residents of Sants in New York, 1970. (H, Y)

Podhorizer-Sandel, E. “O zagładzie Żydów w dystrykcie krakowskim” (On the Extermination of the Jews in Kraków District). *BŻIH* 30 (1959): 87–109. (P)

Sygański, Jan. *Historia Nowego Sącza* (History of Nowy Sącz). 3 vols. Lwów: J. Sygański, 1901–1902. (P)

———. *Nowy Sącz, jego dzieje i pamiątki. Szkic historyczny* (Nowy Sącz, Its History and Monuments. A Historical Sketch). Nowy Sącz: Urzędu Miejskiego w Nowym Sączu, 1892. (P)

Tefuhah, Ya’akovi, ed. *Le-zekher kehilat Tsants* (In Memory of the Community of Tsants). Jerusalem: Bet ha-sefer hatikhon ha-dati la-banot Oylinah di Rotshild, 1967–1968. (H)

BIBLIOGRAPHIC SOURCES

CAHJP; CTD; EDRD; EJ; GA; GUM3; GUM4; GUM5; GUM6; GYLA; HSL; JGFF; JHT; LDL; LYV; PHP3; PJH; RJHS; SF