

SIEDLCE

The first mention of Siedlce dates from the mid-fifteenth century. Later, in 1532, the Polish king Zygmunt August granted Siedlce a municipal charter, whereby the town was permitted to organize weekly markets as well as three fairs a year. Around the mid-sixteenth century, Jews settled in Siedlce, where they were innkeepers at first, then also craftsmen and merchants. Despite the fires that devastated the city in the second half of the seventeenth century, Siedlce was an important artisan, commercial and cultural center by the beginning of the eighteenth century.

During the second half of the eighteenth century, Siedlce's rabbis frequently visited Warsaw to serve Jews who were living there illegally. After the third partition of the Polish Commonwealth, the city briefly fell under Austrian rule, but then passed to the Russians. By the end of the nineteenth century, various Socialist parties, including the Bund, were active in Siedlce; Zionists became the dominating political force during the interwar period. A Jewish high school was opened during World War I; after the interwar period, several local Yiddish weeklies, a Jewish hospital and a range of Jewish organizations—both traditional and secular—flourished.

The German occupation of Siedlce began on September 11, 1939. The Germans repeatedly extorted large sums of money from the Jewish community, and on December 24, 1939, the synagogue was burned down. In August 1941, the Jews were forced into a ghetto that was sealed on October 1. In August 1942, some 10,000 Jews were deported to Treblinka; several thousand more were shot in the forced labor camp established in Siedlce by the end of the year. Hundreds of Jews succeeded in escaping to the forests and organizing partisan groups, some of which continued to fight until the autumn of 1943.

Location

89 km E of Warsaw
52°11' / 22°17'
Voivodship: Siedlce

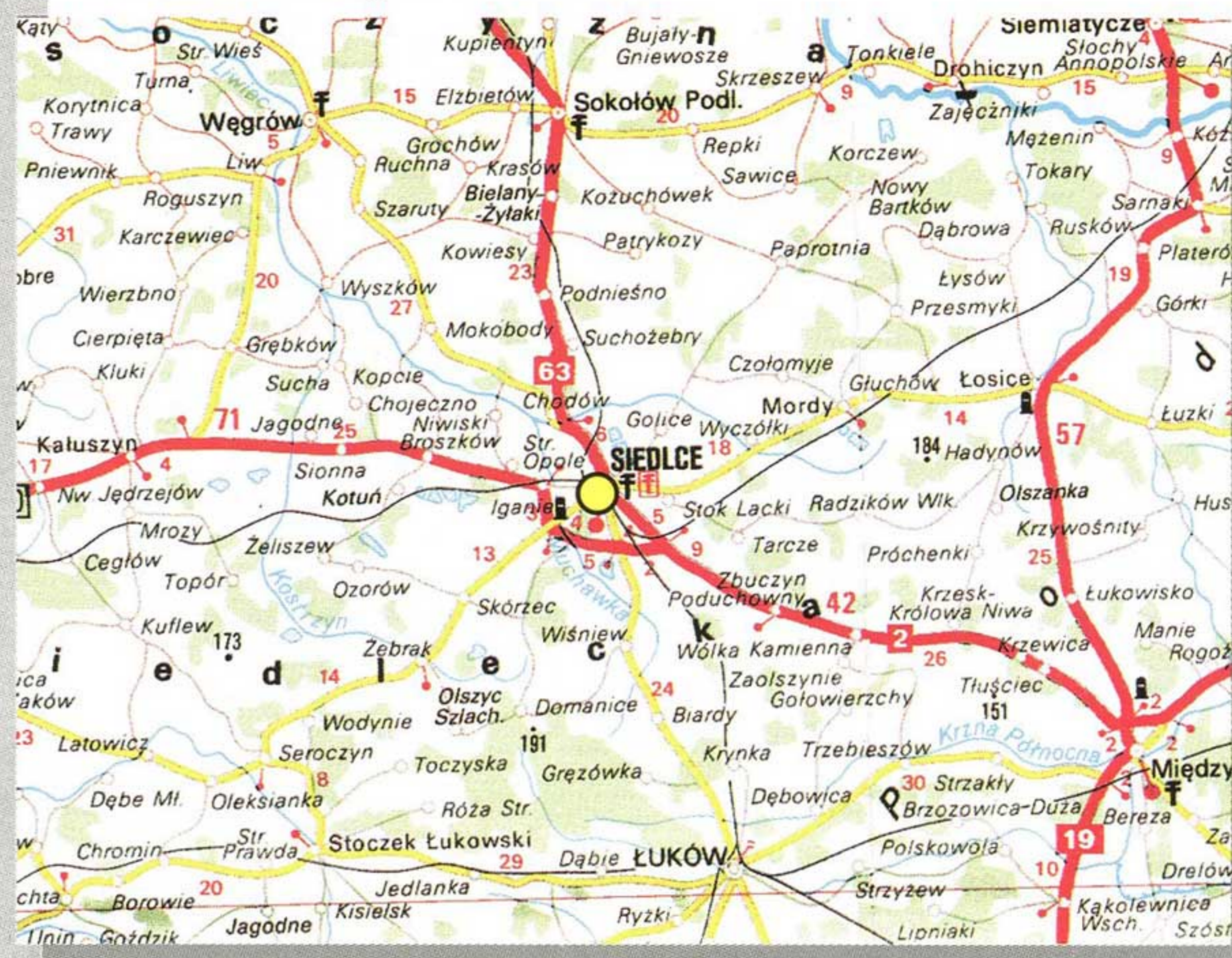
General Population, 1939

35,000 (45% Jewish)

General Population, 1994

73,847

SHEDLETS, SHEDLITZ



SYNAGOGUES

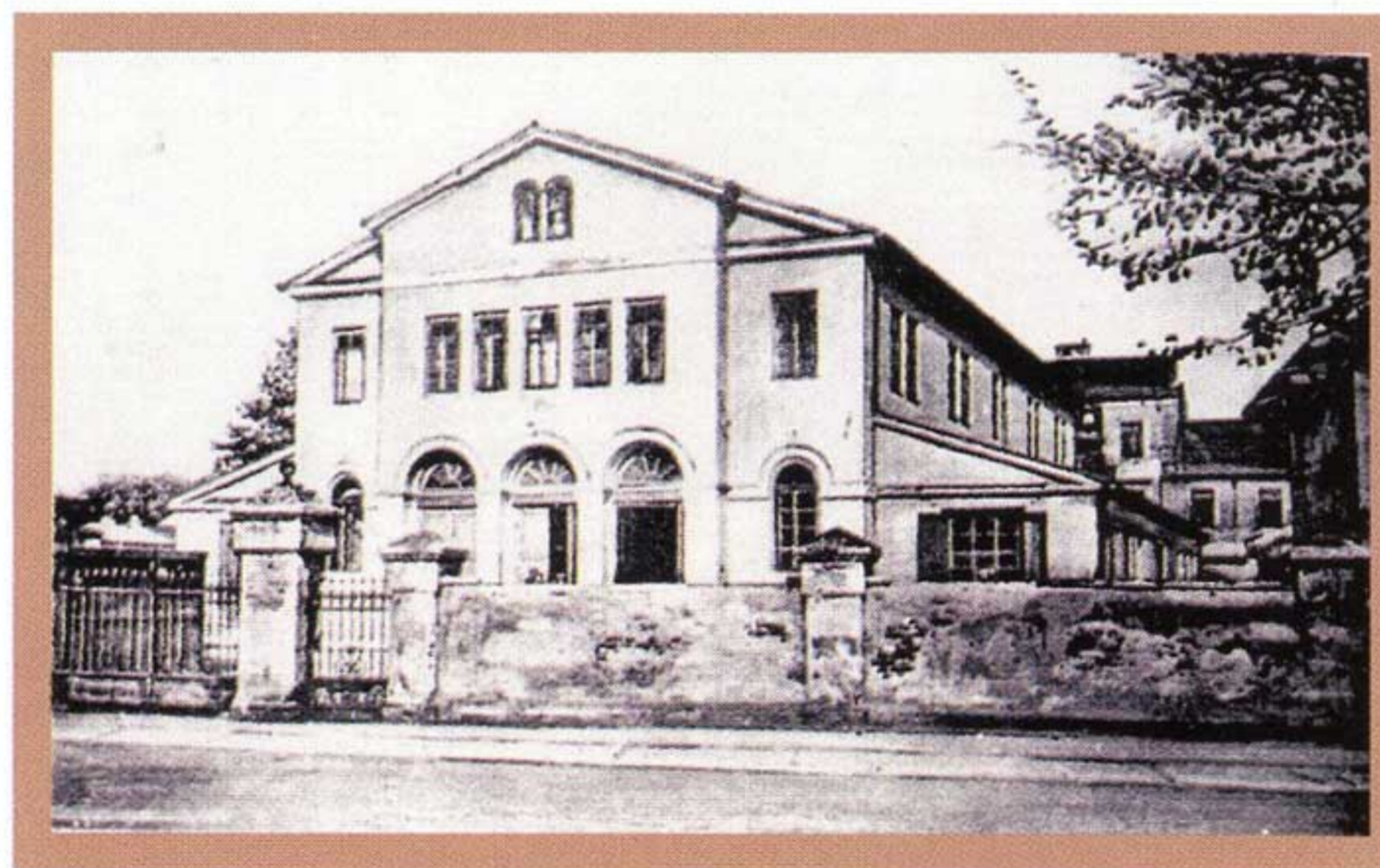
ul. Bohaterów Getta

Great Synagogue, destroyed December 24, 1939.

ul. Czerwonego Krzyża 13

Bet Midrash, dating from nineteenth century.

Current use: warehouse.



Great Synagogue, pre-1939

1



Bet Midrash, ul. Czerwonego Krzyża 13, 1994

2

JEWISH CEMETERY

ul. Szkolna

Cemetery founded in 1807.

About 1,000 tombstones remain, dating from the nineteenth century.



■ Holocaust monument, ul. Bohaterów Getta, 1994 3

HOLOCAUST MEMORIALS

ul. Bohaterów Getta (site of former synagogue)

Monument in memory of 17,000 Jews deported to Treblinka.

ul. Szkolna (Jewish cemetery)

Holocaust monument formed from 100 tombstones.



■ ul. Ogrodowa, c. 1917 4

DEPORTATIONS

Treblinka.

SELECTED READING

Fainzilber, M. *Oyf di khurves fun mayn heym: khurbn Shedlets* (On the Ruins of My Home: The Destruction of Siedlce). Tel Aviv: Committee of Townspeople, 1952. (Y).

Kaspi, Isaac. *Megilat pera'ot Shedlets bi-shenat 1906* (Chronicle of the Siedlce Pogrom in 1906). Tel Aviv: I. Kaspi, 1947. (H).



■ Jewish cemetery, ul. Szkolna, 1994 5

———. "Yidishe prese in Shedlets: 1894–1939" (The Jewish Press in Siedlce: 1894–1939). *YIVO Bleter* 36 (1952): 361–362. (Y)

Śmieciuch, Paweł. "Społeczność żydowska w Siedlcach w latach 1919–1938 w świetle sprawozdań sytuacyjnych starosty powiatu siedleckiego" (Jewish Community of Siedlce in the Years 1919–1938 in Light of the County Administration: Reports of the Siedlce County Administration). *BŻIH* 1/161 (1992): 79–84. (P)

Yassni, A. Wolf, ed. *Sefer yizkor li-kehilat Shedlets* (Memorial Book of the Community of Siedlce). Buenos Aires: Former Residents of Siedlce in Israel and Argentina, 1956. (H, Y)



■ Siedlce, today 6

BIBLIOGRAPHIC SOURCES

CAHJP; CTD; EDRD; EJ; GA; GUM3; GUM4; GUM5; GUM6; HSL; JGFF; LDL; LDS; LVY; PHP1; PJH; RJHS; SF